



FRIENDS OF JIGSAW NEWSLETTER

WINTER 2009



Fundraising News

Fundraising Total

So far for 2009/2010 we have raised **£5,200** with Gifts In Kind totaling **£49,044!**



Merry Christmas
from all at
Jigsaw



Fundraising News

The Guildford Lions Library at Jigsaw School

The wonderful new Library facility was launched at Jigsaw on Thursday 22nd October with a number of friends in attendance. We were extremely pleased to welcome the Chairman of the Guildford Lions, John Fellows, along with a number of his fellow Lions, to formally open the new Library. The facility has been a much awaited one and is proving to be extremely popular with the children as well as enabling them to expand their reading repertoires, learn new skills, increase their levels of independence and gain many other additional benefits. With an amazing range of books, a computer, quiet reading space and an electronic in/out system, the Lions' Library will really help the pupils access the community Libraries and continue to expand the children's lives.

The room was funded by the Lions' Charity Ball held back in May, where they raised an amazing sum and donated **£12,500** to Jigsaw. Without them, we would certainly not yet have this wonderful facility and are exceedingly grateful for their continuing support, generosity and friendship. The Lions' have been involved in Jigsaw's progress over the years in so many ways and we continue to be touched by their kindness. **Thank you!**



Gina Davies

We have been very fortunate this term to have been able to include additional speech and language therapy input from Gina Davies (www.attentionautism.com) into the school curriculum. Gina has spent four full days at Jigsaw demonstrating techniques and providing direct training to our staff team. We had a fun time learning about how to provide "irresistible temptations" to the children to encourage them to communicate and interact with us and each other. It's been a messy time making flour snow, lemonade volcanoes and coloured foam planets amongst many other creative activities. All of the activities have been linked to our half-termly topics and we are ready for the term ahead with many activities prepared for our next topic of 'reversible and irreversible changes.'

HSBC

The continued support that Jigsaw receives from HSBC is fantastic. Nigel Lines, Regional Premier Manager of HSBC's West London Region, recently visited the school with bags full of sports equipment for the pupils, including footballs, skipping ropes, hula-hoops and whistles. Nigel was also able to see the outdoor classroom which had been built over the half-term holiday with funding from our friends at HSBC. The pupils are already making use of the classroom during their playtime and it has provided good shelter from all the rain this term and hopefully welcome relief from the sunshine in the summer! In total, **over £20,000 has been donated** by HSBC over the last three years – thank you so much to everybody at HSBC who has been a part of the various fundraising initiatives!



“It was a wonderful gesture and effort by all the boys”

SaLT and OT

We have been continuing to run Speech and Language Therapy (SaLT) and Occupational Therapy (OT) activities during all play times (in addition to the SaLT and OT input that makes up the pupils' individualised curricula). Again, the pupils have been enjoying these creative and fun activities including dressing up, playing blow football, hanging out pretend washing and using various bubble blowers. Thank you to Jayne Lobley for keeping all these resources well-organised and for ensuring these activities are run daily with all the pupils.

Christmas Shopping Fayre

The Shopping Fayre took place on Saturday, 28th November at the Hilton Cobham. It was a fun and festive morning with a great number of visitors enjoying browsing the stalls away from the busy high street. A number of volunteers: staff, families and friends, helped throughout the morning selling raffle tickets and 10th Anniversary Draw tickets all the while encouraging visitors to spend their money! With free mulled wine and mince pies on offer, the morning was a great success and raised a fantastic amount... a whopping **£1,082.78**. Of that sum, over £80 was made from the refreshments stall alone, so thank you to all those Jigsaw parents who donated the tasty treats and drinks and thank you to the Hilton for the tea and coffee! Thank you also to the stallholders – we hope you had a successful morning and sincerely appreciate the donations you have all made to the school towards purchasing resources for the children to aid with their individual education plans.

“the morning was a great success and raised a fantastic amount... a whopping **£1,082.78**”

Salesian College

On Monday, 23rd November, 6 pupils from Salesian College, Farnborough, came to visit us here at Jigsaw. Isaac, Sammy, Cameron, Jordan, Robbie and Anand completed a 10 mile sponsored walk in fancy dress around the hills of the Devils Punchbowl area in Surrey. Isaac is a family friend of one of our students, Luke, and very kindly chose Jigsaw as the beneficiary of their great efforts. The boys, all aged 13/14 were accompanied by Michael Stone (Assistant Headmaster), Charlene Enright (Teacher), Isaac's mother and Luke's father on their visit to Jigsaw to present us with their cheque. They had asked to have a tour of the school and to see Luke at work in his class before presenting us with a cheque in the magnificent sum of **£476.24**. It was a wonderful gesture and effort by all the boys and we would like to send our thanks to them once more. It was particularly lovely to show them around and for them to see Luke working hard in his daily school environment.

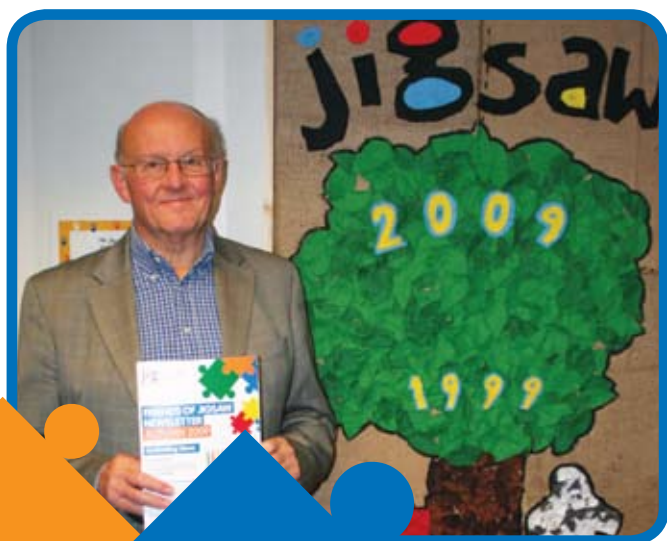
Thank you.



Fundraising News

NADFAS

We were thrilled to be able to welcome members of NADFAS (National Association for Decorative and Fine Art Societies) back to Jigsaw on Thursday, 26th November. Having previously donated **£250** towards the purchase of new art materials, it was an opportunity to demonstrate just what the children have been learning and experiencing with these new materials. Supervisor, Mariann Szabo, who co-ordinates the children's art throughout the school has been pleased to expand the range of materials the children have been able to use and has created some really exceptional artwork. The colourful 10th Anniversary Jigsaw Tree is one example of the work the children have completed and, having been at our recent CABAS® Conference, now has pride of place in the main school hall.



Thank you

Our wonderful team of voluntary drivers

We'd like to pass on our heartfelt thanks to our fantastic volunteer drivers. Originally, David Gill from Voluntary Action SW Surrey visited Jigsaw. Following that visit, he suggested some Cranleigh Rotarians might like to come along and meet us. We were delighted to show the Rotarians around the School and describe what we do here and were even more thrilled when they offered their services as drivers for our minibuses! They come over and help us out each week by driving the buses allowing us to take more of the pupils out to regular activities such as swimming, Riding for the Disabled, shopping trips for Food Tech classes, tennis, trampolining, gymnastics, rock climbing, local cafes, the Life Skills Centre, etc.

They have also helped take the pupils to some fantastic whole-school trips such as the Look Out Centre and the Sea-Life Centre. Their help and support has proved invaluable over the past few terms as, without them, our children would definitely not be accessing as many experiences and opportunities as they now do. So, a huge thank you to David Gill, Ken Head, Andrew Kolmar, Brian Vine, Easton McCracken and Michael Hart. We would also like to welcome Katy Wale to our team of drivers. Katy has come to us via Dunsfold Park's newsletter/website and we are delighted to welcome her to the team!

Brewers

Brett Nicholls, Manager of Brewer's store in Guildford, has very kindly donated some paint for us to use to jazz up our school walls a little! The plan is to paint jigsaw shapes on some of the walls around the school in our Jigsaw colours. Our Patron, Kim Robson, has enlisted the support of some of her friends from Blue/Red Watch at Guildford Fire Station to help and the work will be done over a weekend or evening sometime soon. We hope it will inject some more fun colour into the corridors of Jigsaw! Following an in-store promotion, Brewers have also generously donated a very smart ladies mountain bike for us to raffle/auction. Details of this to follow shortly.



“the staff at Sainsbury’s have been unfailingly kind and helpful ”



Estates Office Team, Dunsfold Park

Thank you to Karen, Nancy, Abi, Jim, David, Jamie, Danny and his security team and everyone else at the Estates Office for their continued support throughout this last year. A special thank you for the use of your chairs, webcam, video editing expertise....and for being so helpful with the distribution of our news to other Dunsfold tenants. We’d also like to pass on thanks to the 100 Property Club for enabling us to obtain a further minibus. We are hoping to have an event on site next summer and Rutland have kindly given permission for us to use the aerodrome for this. **Thank you all.**

Sainsburys Cranleigh

Each week the children are visiting Sainsbury’s in Cranleigh to purchase items for their Food Tech classes. Although these trips are informal the staff at Sainsbury’s have been unfailingly kind and helpful and we’d like to take this opportunity to thank them all. Our pupils are becoming quite a regular fixture in Cranleigh purchasing their ingredients each week!

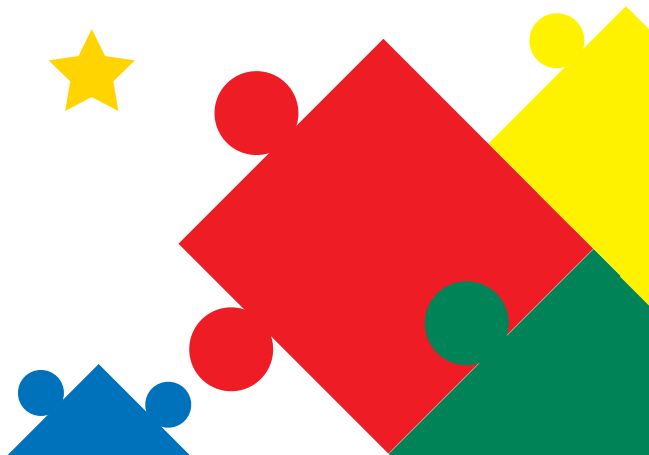


Verbal Behaviour Workshop

Run by Emma Hawkins, this open workshop ran on 2nd December at Jigsaw School. With over 25 attendees the day provided an insight into listener/ speaker verbal milestones as set out by Greer and Ross (2008) in their book Verbal Behavior Analysis as well as an opportunity to receive information on protocols that can induce these milestones in children and young people who do not have them in their repertoire. The day was very well received with good feedback from attendees and some interesting and worthwhile discussions. For more information, or information on future Workshops being run by Jigsaw, please visit www.jigsawschool.co.uk or contact **Emma Hawkins** directly at Jigsaw.

96.4 Eagle Radio

Eagle Radio are supporting Jigsaw again this year with donations from their Annual Toy Appeal. You may well have heard the trails for their annual initiative on the radio and we are absolutely delighted to learn that we are once again to benefit. Members of the local community take toys to various deposit points around the county (local libraries, supermarkets, etc) and on 18th December, Eagle will be delivering a selection of those toys to the school. This is a wonderful gesture and enables each class to not only have a fresh range of activities, books and toys but also provides the children with new incentives to work towards and different stimulation. All the toys are rotated throughout the classrooms with all the children benefiting. **Thank you Eagle Radio but also to everyone who has donated a toy for their Appeal!**





Thank you

Lauren Jackson and **Jayne Loble**, both members of Jigsaw Staff, along with their friend **Kim Hinks**, recently completed the Barns Green Half Marathon raising an amazing **£708.20** for Jigsaw. Lauren and Kim finished in 2hrs 24 mins whilst Jayne came in at 2hrs 13 mins. Really impressive – **well done and thank you to each of you!**



We would also like to say a huge thank you to:

Karen Illingworth who has donated **£25**

Rosie Phillips and Pampered Chef who donated **£75**

HSBC for an additional **£430** through their Matched Giving programme

Chapman Charitable Trust who donated **£1,000**

The Sussex Police's Property Act Fund who donated **£450** towards the BURSARY FUND

Shirley Jeffrey who donated **£50**

Jean Rendell of St Mary's Frensham Trust who donated **£163**

Waitrose in Haslemere are donating **£336** following their recent Community Matters initiative.

10th Anniversary Draw

Tickets are still available! Prizes include: Two night stay at the Hilton Stucky Molino in Venice, which is superbly located on Giudecca Island. Tickets are £1 each or £5 for a book of 5. We hold a licence that allows anyone to sell tickets on our behalf, so if you think you might be able to help, do please call Steven Morgan in Fundraising on **01483 273874**. Alternatively, do please contact Steven if you would like to buy some tickets yourself and be in with a chance to stay at one of the top hotels in Venice! Ticket stubs need to be back at Jigsaw by 22nd January 2010 and the draw itself will take place on **27th January**.

Gifts In Kind

Brewers – **Bicycle & Paint**

Electronic Arts – **Games**

HSBC – **Sports Equipment**

June Tallon – **Watercolour painting**

Noelle Callingham-Woods – **Puzzle & Washing Line**

Adele Grandon – **Cuddly Toys**

Mary from Huntshill Farm Shop – **Teddy Bear**

Jigsaw parents – **Mince pies, cakes & mulled wine**

Stallholders – **Raffle Prizes**

Hilton – **Room Hire**

Visit Jigsaw's Website!

www.jigsawschool.co.uk

Staff & Pupils News

We are sorry to have said goodbye to **Sarah Cleavely** and **Sylwia Part** earlier this term and to be saying goodbye to **Lauren Gillett** and **Tasha Morris** at Christmas. We must also say a fond farewell to both **Carol Buchan** and **Amy Leney** who will not be returning to school following their maternity leave.

“Thank you to each of you for your help and support whilst here with us and we wish you all the very best for the future.”

We are delighted to welcome some new faces to Jigsaw this term... **Georgina Maclean** and **Carly Wilkins**. We wish you both an enjoyable and rewarding career here at Jigsaw.

We are especially happy to welcome

Henry to Jigsaw this term. Henry is making good friends with his classmates **Jack, Nalaka, Kyle** and **Luca**. **Welcome to both Henry and his family.**

Christmas

Christmas Concerts

These are taking place on **Wednesday 15th December** and **Thursday 16th December** here at Dunsfold Park and there will be a full follow up piece, along with some photographs in the next issue.

Next Term Dates:

Term starts:

Tuesday 5th January

Staff have an inset training day on Monday 4th January

Half term:

Monday 15th February

Term re-starts for pupils on

Tuesday 23rd February

Staff inset training day on Monday 22nd February



Further thanks

The **Shakers** initiative is still going amazingly well and shakers are coming back into school wonderfully full! We so far have had:

ABode Hotel **£30.35**

Jo Highley **£15.94**

Matthew McClymont **£6.75**

The Gray Family **£106.27** (3 shakers)

The Johnstone Family **£43.95**

The Hatton Family **£12.59**

The Richmond Arms **£34.35**

The Walpitagama Family **£51.27**

Cranley Arms **£31.77**

The O'Connor Family **£26.69**

Thank you to everyone who is participating in this scheme – it is definitely making a real difference as we've been able to purchase some key resources very quickly for the children.

A final thank you to all those who have supported us in our various Christmas Fundraising endeavours – wrap, cards, Shopping Fayre, draw, etc, etc!

**In the meantime....
we wish you all a
very Festive Holiday
Season and Happy
New Year!**



Contact us

Jigsaw School Dunsfold

T: 01483 273874 F: 01483 548986

E: info@jigsawschool.co.uk

Fundraising Enquiries

E: stevenmorgan@jigsawschool.co.uk

PR Enquiries

E: katelefeber@jigsawschool.co.uk

Interested in a career at Jigsaw?

E: racheturnbull@jigsawschool.co.uk

The Jigsaw School is committed to safeguarding and promoting the welfare of children and young people and expects all staff and volunteers to share the same commitment.

Thank you for all your support
in educating children with autistic
spectrum disorders

www.jigsawschool.co.uk

Please note that our website now has two new dedicated buttons on the front page. Click on these for the current Term Dates or a copy of the School Prospectus.